



GMT MONTHLY MEMBERSHIP PROGRESS REPORT

Results as of: 6/30/2019

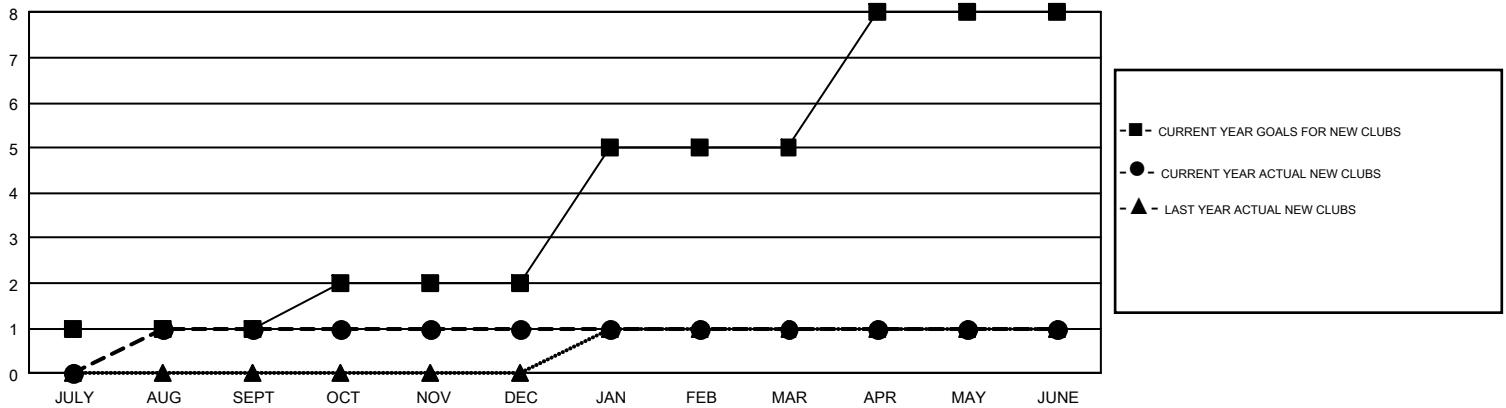
GMT Constitutional Area 7, Group B

GMT: CLIFFORD HEYWOOD

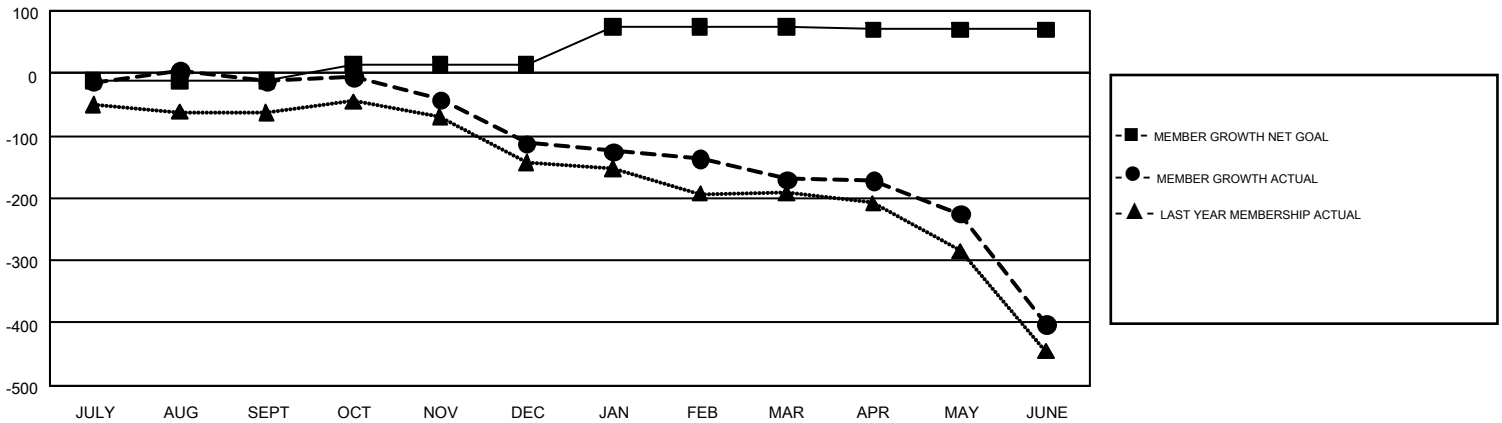
REPORT DOES NOT INCLUDE CLUBS IN UNDISTRICTED AREAS.

Clubs				Members			
RESULTS FOR 2018-2019				RESULTS FOR 2018-2019			
QUARTER	NEW CLUB GOAL	NEW CLUBS	DROPPED CLUBS	QUARTER	MEMBER GROWTH NET GOAL	MEMBER GROWTH ACTUAL	DROPPED MEMBERS ACTUAL (including transfers)
JULY/AUG/SEPT	1	1	5	JULY/AUG/SEPT	-12	195	181
OCT/NOV/DEC	1	0	0	OCT/NOV/DEC	25	150	234
JAN/FEB/MAR	3	0	3	JAN/FEB/MAR	62	126	168
APR/MAY/JUNE	3	0	2	APR/MAY/JUNE	-5	255	452

GOALS AND ACTUAL NEW CLUBS CUMULATIVE



GOALS AND ACTUAL MEMBERS CUMULATIVE



DROPPED CLUBS: 10	234 CLUBS OF 352 ADDED 1 OR MORE NEW MEMBERS	GENDER DISTRIBUTION MALE 6,353 (69.52%) FEMALE 2,786 (30.48%)
DROPPED MEMBERS DECEASED 143 CLUB CANCELLED 21 OTHER 870 TOTAL 1,034	CLICK HERE FOR CUMULATIVE MEMBERSHIP DATA	TOTAL FAMILY UNIT MEMBERS 796 FAMILY MEMBERS PAYING HALF DUES 403